

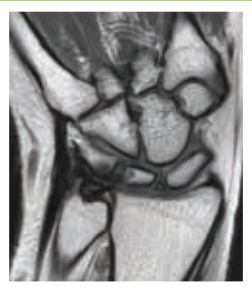


POST EXAMINATION

Once the images are recorded, the Radiologist will interpret the images and a report on your MRI examination is sent to your referring doctor.

Some scans are read by two Radiologists or held over for a Radiologist specialising in the particular MRI examination and this may result in a slight delay sending your MRI report to your Doctor.

If the MRI images or DVD are sent to you, please store them in a safe place with your other medical information as they may be required in the future for comparison with other radiology examinations or for a Specialist Doctors appointment.



IT'S WHAT'S ON THE
INSIDE THAT COUNTS



www.trgimaging.co.nz

MRI EXAMINATION

Helping you through



WHAT IS Magnetic Resonance Imaging?

MRI combines the use of a very strong magnet, radio waves and a computer system to create detailed images of the organs and tissues within the body. The level of soft tissue detail seen with an MRI is extraordinary compared with other imaging modalities. This makes MRI the most sensitive imaging option for many areas of the body including the head, spine and joints.

MRI is an imaging option for many areas of the head and body and for joint and musculoskeletal problems. It is the most sensitive examination to image many spinal and joint problems. MRI requires specialised equipment and expertise, and allows evaluation of some body structures that may not be as visible with other imaging methods.



PRE EXAMINATION

When you contact us for an appointment, instructions will be given to you about your scan, including:

- instructions on where to go for your MRI scan
- a list of safety questions
- information about any preparation needed before your scan—this may include a period without food, and/or the need for an injection of contrast medium
- information about how to arrange “prior approval” from your medical insurance company for your MRI—this means you can send them the invoice for payment, rather than pay first and then claim
- discuss the requirements if ACC are funding your examination.

Our staff will go through a questionnaire with you and ask you about any metal in or on your body, perhaps from a previous operation or accident. You should also tell the staff if you are unable to lie flat or if you have claustrophobia. If there is a chance you could be pregnant, please let us know.

There are no known effects from the magnetic field: however if you have a pacemaker, some surgical clips or heart valves please advise us when making your booking. Patients with prosthetic joints can be scanned although the image is affected in the immediate area.

THE EXAMINATION

The MRI machine is basically a large cylinder-shaped magnet. A specially trained MRI technologist will go through the questionnaire that has already been discussed with you.

They will then take you into the MRI room and position you on a bed that will move into the doughnut-shaped cylinder for the examination. It is important to remain perfectly still during the examination. If you have difficulty lying flat, or are uncomfortable in confined spaces, the MRI staff can assist and make you more comfortable during the examination. You may need to lie on this bed for more than twenty minutes so let the staff know if you are not comfortable.

The technologist is able to talk to you via a two-way intercom during the scan and will let you know what is happening. You have a bell so you can contact the technologist even during the scan if you need to.

If you have any questions, please don't hesitate to ask at any time. The MRI machine makes a loud tapping noise while scanning. You will be able to listen to music during the scan, so bring along your favourite CD.

**AN MRI EXAMINATION GENERALLY TAKES
BETWEEN 30 AND 60 MINUTES.**

