



THE EXAMINATION

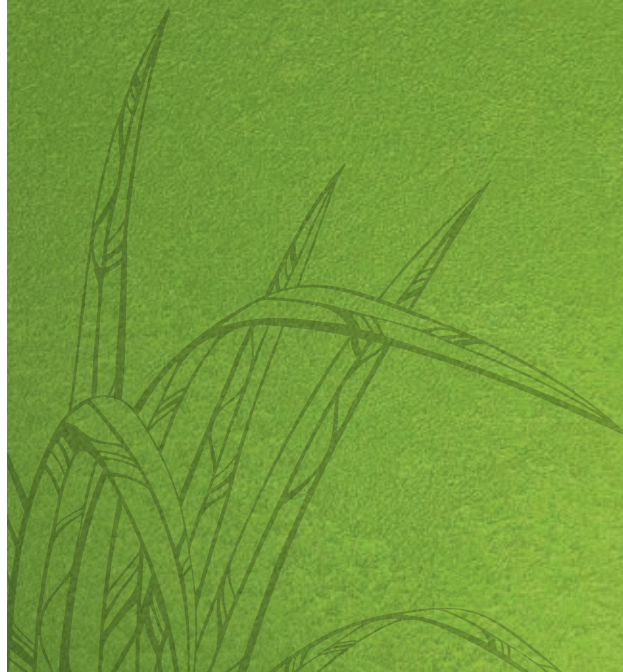
When you arrive you will be asked to change into a gown. It may be necessary to remove metallic objects such as jewellery, dentures, hearing aids etc. An MRT trained in the use of x-ray and CT scanning will position you on a bed that moves through a large “donut” shaped x-ray scanner. Images are taken when the appropriate area for diagnosis lies directly within the donut apparatus. Although the scanning bed moves during the scan, you will be asked to remain very still and may be asked to hold your breath while some images are taken.

POST EXAMINATION

When your CT scan is completed the Radiologist will interpret the images and send a report to your doctor.



IT'S WHAT'S ON THE
INSIDE THAT COUNTS



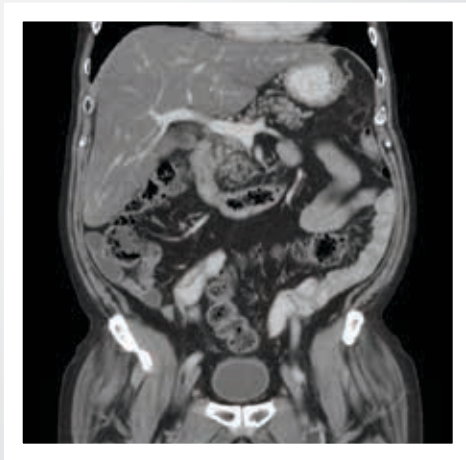
CT SCAN

Computerised Tomography



WHAT IS A CT Scan?

A CT (computed tomography) scan is an advanced imaging technique which uses x-rays to produce detailed cross-sectional images of your body. CT scans show the internal organs much better than standard x-rays do and are a very common and important examination technique with today's modern medicine.



WHAT ARE The Risks Involved?

The health risk from exposure to medical radiation is generally outweighed by the health benefit to the patient. Low dose radiation is used for all CT imaging and your CT MRT will ensure the right dose is administered for you.

CT scans generate very detailed images (more so than x-ray) in your diagnosis. Conversely, some areas of the body are highly sensitive to radiation exposure and the health benefit versus possible detriment will be considered by your Doctor/ Specialist before referring you for this procedure.

Some CT scans require an injection of contrast medium, which shows up on the CT images and enables the radiologist to identify some organs or areas more clearly. If you have allergies, diabetes, kidney disease or asthma, please discuss this with the receptionist and MRT when you make your appointment and with the CT staff.



PRE EXAMINATION

When you contact us for an appointment, instructions will be given to you about your CT scan, including:

- details regarding preparation needed before your scan. This may include a period without food and also drinking some barium a set time before your appointment.
- details on how to arrange "prior approval" from your medical insurance company for your CT examination.
- requirements if ACC are to fund your CT examination.
- information about what to do after your CT scan is completed.

