



MRI Examination

Helping you through

Providing patient centered
excellence across the North Island

www.canopyimaging.co.nz

[Read more →](#)



What is **Magnetic Resonance Imaging?**

MRI uses a very strong magnet, radio waves and a computer system to create detailed images of the body organs and tissues. The soft tissue detail seen with an MRI is extraordinary compared with other imaging. This makes MRI the most sensitive imaging option for many areas of the body including the head, spine and joints.

MRI is an imaging option for many areas of the head and body as well as for joint and musculoskeletal problems.

It is the most sensitive examination for spinal and joint problems. MRI requires specialised equipment and expertise, and shows some body structures that may not be as visible with other imaging.

Pre-examination

When you contact us for an appointment, we will discuss with you:

- Where to go for your MRI scan
- Some safety questions
- How to arrange prior approval from your medical insurance company for your MRI - this means we can send them the invoice for payment, rather than pay first and then claim.
- If ACC will be funding your examination
- Information about your scan

Our staff will go through a questionnaire with you and ask you about any metal in or on your body, perhaps from a previous operation or accident. You should also tell the staff if you are unable to lie flat or if you have claustrophobia. If there is a chance you could be pregnant, please let us know.

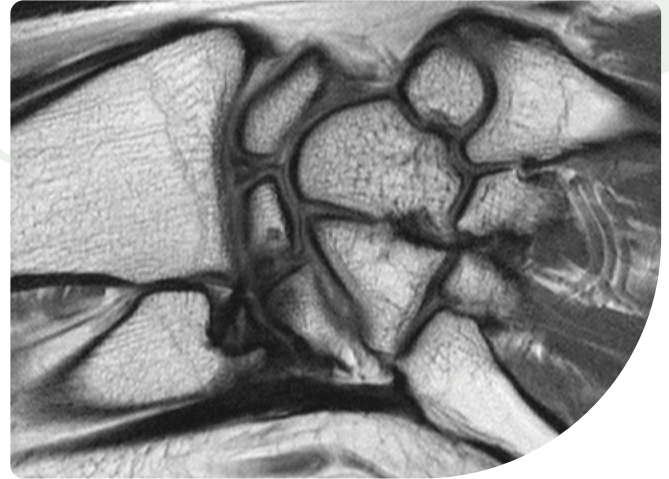
There are no known effects from the magnetic field: however if you have a pacemaker, some surgical clips or heart valves please advise us when making your booking. Patients with prosthetic joints can be scanned although the image is affected in the immediate area.

The examination

The MRI machine is basically a large cylinder-shaped magnet. After you arrive, a specially trained MRI technologist will go through the questionnaire that has already been discussed with you.

They will then take you into the MRI room and position you on a bed that will move into the donut-like machine for the examination. It is important to remain perfectly still during the examination. If you have difficulty lying flat, or are uncomfortable in confined spaces, the MRI staff will assist and make you more comfortable during the examination. You may need to lie on this bed for more than twenty minutes so let the staff know if you are not comfortable.

The technologist is able to talk to you via a two-way intercom during the scan and will let you know what is happening. You have a bell so you can contact the technologist during the scan if you need to.



If you have any questions, please don't hesitate to ask at any time. The MRI machine makes a loud tapping noise while scanning. You will be able to listen to music during the scan, so have a think about your favourite music playlist.

An MRI examination usually takes between 20 to 60 minutes.

Post examination

After your scan is complete, a radiologist will interpret the images and generate a report, which will be sent to your referring doctor.

Certain scans are read by two radiologists or by one of our radiologists who has advanced expertise in a particular body region or condition. This could result in a slight delay in sending your MRI report to your doctor.

All images will be sent to the “patient portal” which you can access online.



MRI caravan located in Kerikeri Clinic



Providing patient centered
excellence across the North Island

• Northland • Auckland • Bay of Plenty • Gisborne • Hawkes Bay • Taranaki • Manawatu

www.canopyimaging.co.nz